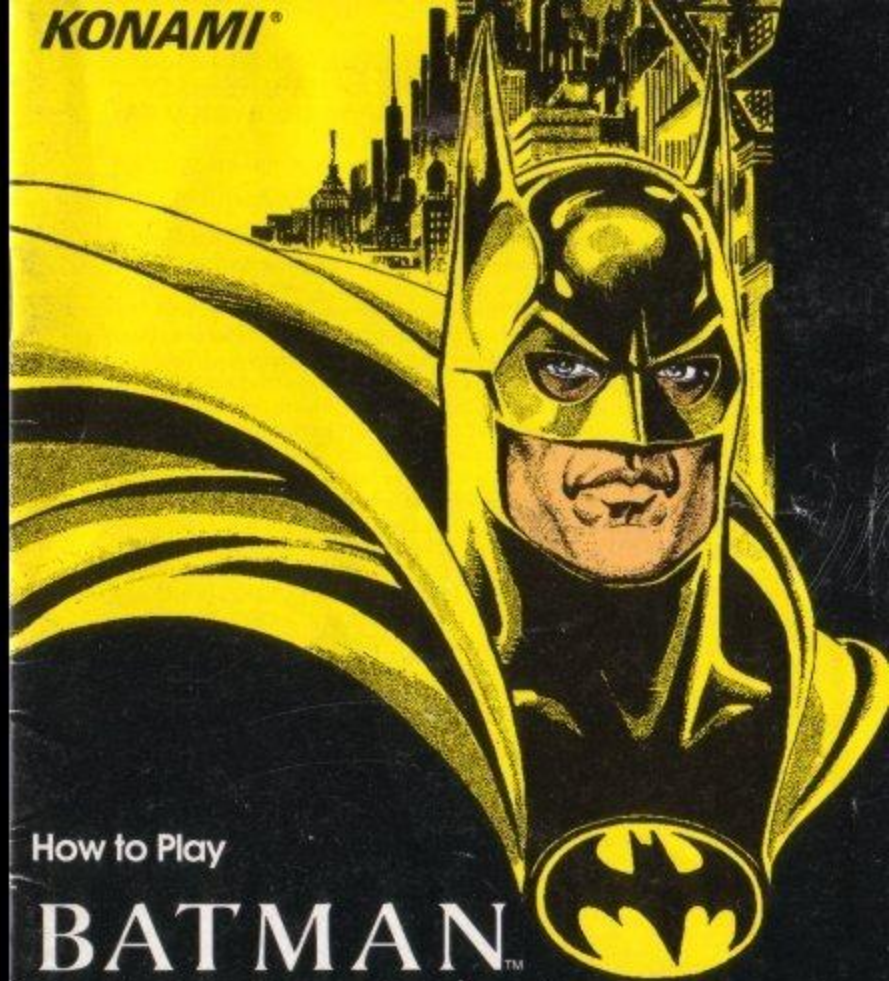


KONAMI®



How to Play

# BATMAN™ RETURNS

INSTRUCTION BOOKLET

SNS-B J-USA

**SUPER NINTENDO**  
ENTERTAINMENT SYSTEM



WARNING! PLEASE READ THE ENCLOSED CONSUMER INFORMATION AND PRECAUTIONS BOOKLET CAREFULLY BEFORE USING YOUR NINTENDO® HARDWARE SYSTEM OR GAME PAK.

### Konami, Inc. Limited Warranty

Konami, Inc. warrants to the original purchaser of this Konami software product that the medium on which this computer program is recorded is free from defects in materials and workmanship for a period of ninety (90) days from the date of purchase. This Konami software program is sold "as is," without express or implied warranty of any kind, and Konami is not liable for any losses or damages of any kind resulting from use of this program. Konami agrees for a period of ninety (90) days to either repair or replace, at its option, free of charge, any Konami software product, postage paid, with proof of date of purchase, at its Factory Service Center. This warranty is not applicable to normal wear and tear. This warranty shall not be applicable and shall be void if the defect in the Konami software product has arisen through abuse, unreasonable use, mistreatment or neglect. THIS WARRANTY IS IN LIEU OF ALL OTHER WARRANTIES AND NO OTHER REPRESENTATIONS OR CLAIMS OF ANY NATURE SHALL BE BINDING ON OR OBLIGATE KONAMI. ANY IMPLIED WARRANTIES APPLICABLE TO THIS SOFTWARE PRODUCT, INCLUDING WARRANTIES OF MERCHANTABILITY AND FITNESS FOR A PARTICULAR PURPOSE, ARE LIMITED TO THE NINETY (90) DAY PERIOD DESCRIBED ABOVE. IN NO EVENT WILL KONAMI BE LIABLE FOR ANY SPECIAL INCIDENTAL OR CONSEQUENTIAL DAMAGES RESULTING FROM POSSESSION, USE OR MALFUNCTION OF THIS KONAMI SOFTWARE PRODUCT.

Some states do not allow limitations as to how long an implied warranty lasts and/or exclusions or limitations of incidental or consequential damages so the above limitations and/or exclusions of liability may not apply to you. This warranty gives you specific rights, and you may also have other rights which vary from state to state.



THIS OFFICIAL SEAL IS YOUR ASSURANCE THAT NINTENDO HAS APPROVED THE QUALITY OF THIS PRODUCT. ALWAYS LOOK FOR THIS SEAL WHEN BUYING GAMES AND ACCESSORIES TO ENSURE COMPLETE COMPATIBILITY WITH YOUR SUPER NINTENDO ENTERTAINMENT SYSTEM. ALL NINTENDO PRODUCTS ARE LICENSED BY SALE FOR USE ONLY WITH OTHER AUTHORIZED PRODUCTS BEARING THE OFFICIAL NINTENDO SEAL OF QUALITY.

LICENSED BY



NINTENDO, SUPER NINTENDO ENTERTAINMENT SYSTEM, SUPER NES AND THE OFFICIAL SEALS ARE TRADEMARKS OF NINTENDO OF AMERICA INC.  
©1991 NINTENDO OF AMERICA INC.

## Congratulations!

You are the proud owner of the **Batman™ Returns** game for the Super NES™. You can become **The Dark Knight** and attempt to keep **Gotham City** from being overrun by the **Red Triangle Circus Gang**. But it won't be the normal fun you would get from beating up a bunch of clowns, because behind their dastardly deeds are the "fowl" plottings of **The Penguin** and the cunning **Catwoman**.

### Table of Contents

- 4 ..... Introduction—Havoc in **Gotham Plaza**
- 6 ..... Objectives—The game is at hand
- 7 ..... Starting **Batman™ Returns**
- 8 ..... Guiding **The Dark Knight**—The Controller
- 9 ..... Making a move on your foes
- 11 ..... The game screen
- 12 ..... The options
- 13 ..... Those wonderful toys
- 15 ..... The stages
- 19 ..... Consumer Support
- 19 ..... Warranty Information





## Havoc in Gotham Plaza

**G**otham City is in the midst of a jubilant holiday celebration. The mayor is giving his annual speech before the lighting of the Christmas tree in **Gotham Plaza**, when, much to the surprise of the crowd, a huge gift box appears at the back of the plaza. As the crowd quiets, the box erupts with the roar of powerful engines. Skull-masked motorcyclists, flame-breathing clowns and knife wielding acrobats storm the crowd, striking terror where moments before there had been glee.

Police Commissioner Gordon, on hand for the celebration, quickly sends word to the precinct headquarters: "Send the signal! We need **Batman** here quickly."

**M**iles away, in stately **Wayne Manor**, millionaire bachelor **Bruce Wayne** looks up from his desk. A series of mechanized mirrors has detected the **Bat-Signal** and reflected it through a window in Wayne's study. At that moment, his faithful butler **Alfred** enters the room. "Sir, shall I prepare?" **Alfred** asks. He knows the answer already, for his employer has never refused the call.

"Yes, **Alfred**." Wayne's brow furrows as he heads toward a large aquarium in the center of the room. "Any idea what's happening?" He rolls up a sleeve, plunges his arm into the fish tank and presses a button on an ornamental castle. Behind him a secret panel opens to reveal a passage.

**Alfred** follows him through the door. They walk through the passageway leading to the hidden **Batcave**. "There is some commotion at the Plaza, Sir," **Alfred** responds.

Once inside the **Batcave**, **Alfred** takes a seat at a bank of computer terminals. Bruce Wayne activates a console panel beside a large vault door. In a few seconds the vault opens. Inside are a number of armored **Batman** suits and a vast array of high-tech weapons. He scans the suits. "What's the situation, **Alfred**?" he calls out.

At the monitors, **Alfred** has intercepted a local satellite feed of a newscast. He sees the thugs wreaking havoc on the citizens. "Approximately twenty strong. Wearing what appear to be circus costumes—no sign of armor. Weapons noted include knives, flame throwers, possibly small arms. Most on foot, some motorcycles."

"Thanks. Link with the **Batmobile** and keep me apprised of the situation." He dons a suit of light armor with good flexibility. "I'll go in at ground level from the east side of the plaza. If you see anything to dictate otherwise, let me know."

As Bruce pulls on the rubber cowl of his suit, **Alfred** hits a remote control button which starts the engine on the **Batmobile**. A moment later, **Batman** leaps into the cockpit and speeds away to rescue **Gotham City** once again!



## The game is at hand

**B**atman™ Returns is a one-player game that follows the storyline of the blockbuster motion picture. You control the **Dark Knight** and lead him against the **Red Triangle Circus Gang**. Battle your way past the best they have to throw at you and save the **Ice Princess** from **Catwoman**. But be careful, she's a fiesty feline and a fierce fighter. If you can get past her, you'll still have to face **The Penguin** and his penguin army.

The game contains seven different levels of action. In most of the stages you will control **Batman** as he stalks the city on foot. Use your fists—or an assortment of high-tech tools—to defeat your foes. In one stage you will even guide the **Batmobile** along the streets of **Gotham City**.

Adjust the difficulty level to suit your skill level. There are five levels from which to choose: **EASY**, **NORMAL**, **HARD**, **SPECIAL** and **MANIA**. The number of "lives" you get can be either 3, 5 or 7. You can also reconfigure the control pad, if you wish. Details about changing these game options can be found on page 12.

## Starting Batman™ Returns

**W**ith the Super NES™ turned off, insert the game pak into the unit. Now turn the power on. You will see the game credits screen, followed by the introduction.

When you are ready to begin the game, press the **START** button. This will advance you to the game start screen. Use the control pad up/down to select either **GAME START** or **OPTIONS**.

### Starting the game

**I**n the first level of the first stage, you begin on the streets of **Gotham City**. The holiday crowd is being terrorized by the **Red Triangle Circus Gang**. Fight off the thugs and make your way to the boss character at the end of the stage. You can use a variety of moves and weapons. These will be explained later.





## Guiding *The Dark Knight*

### The Controller (Initial settings)

Control pad ... Controls all directional movement—left, right, up and down—for Batman and the Batmobile.

START ... Pause during the game

SELECT ... Change selected item

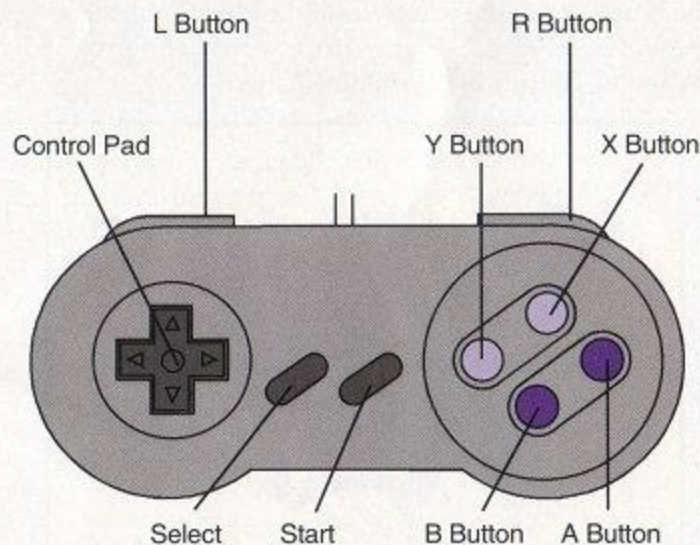
A button ... Press to use a selected item

B button ... Jump

X button ... Press with R/L buttons to throw test tube

Y button ... Attack (Batmobile—shoot discs)

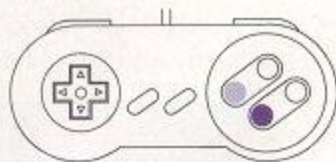
L or R button ... Defense



## Making a move on your foes

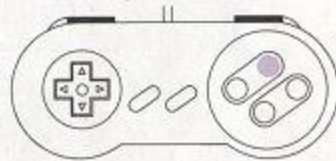
The following keypresses (black keys) are used to perform **Batman's** special moves.

- The cape sweep—Does major damage to any enemy in range.



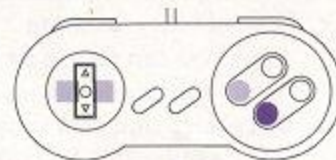
Press the B and Y buttons simultaneously.

- Test tube toss—Disables all enemies on the screen.



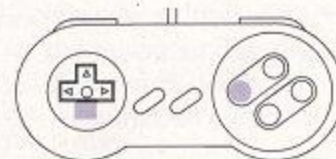
Hold the Right or Left button, then press X.

- Flying jump kick—Inflicts a serious hit on the untended target.



Press B to jump, then—while in the air—press Y to kick.

- Flying attack—Assault from above!



Press B to jump, then—while in the air—press down and Y to spread your wings and attack.



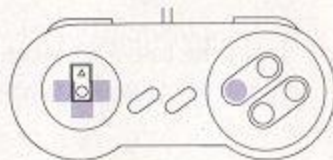
There is a subset of moves that you can use when **Batman** picks up a bad guy. To pick up a bad guy, walk toward him/her. When you are close enough, Batman will reach out and grab the enemy by the neck.

- Standard attack—Hold an enemy and punch'em in the gut.



Press the Y button after picking up the enemy.

- The head toss—Pick up enemies and throw them to the ground.



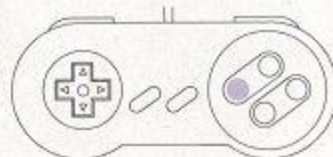
Press right, down or left on the control pad, then press Y.

- Special toss—In some areas you can fling a foe back against a window, fence, etc.



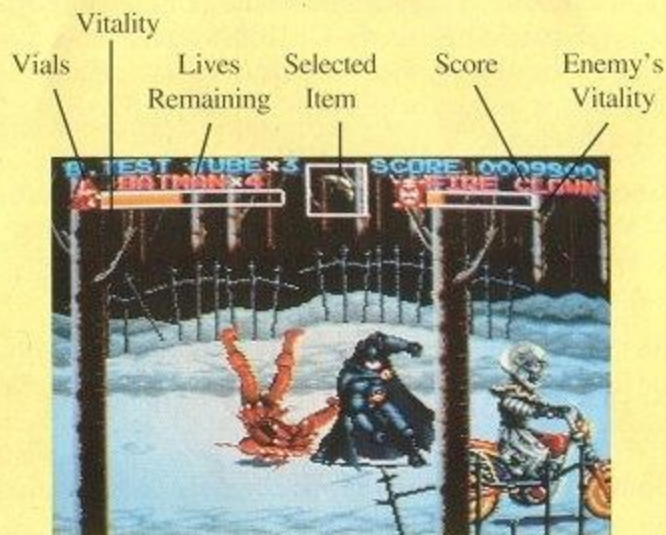
Pick an enemy up, press up on the control pad, then press Y.

- The double whammy—Tough to master but worth it. Puts a big hurt on two bad dudes.



When you have one guy in hand, move close to another and grab him. Then press Y.

## The game screen



Vials ... Number remaining

Vitality ... Measures **Batman's** health. When it is empty, **Batman** loses a "life."

Selected item ... Indicates the current gadget in use. This could be the **Batarang** or spear gun.

Score ... Number of points you've earned.

Lives remaining ... Each life gives you another chance to save **Gotham City**! Guard them well, because when they are gone, the game is over.



## The options are yours

You may change the options for the game before you begin playing. Select the **OPTIONS** screen at the beginning by moving the control pad up/down until the pointer is in front of **OPTIONS**. Press the **START** button to select it.

- **Game Level: EASY, NORMAL, HARD, SPECIAL, MANIA**—Select the level that is best for you. Winning the game at harder levels results in different ending sequences. Work up to **MANIA** level to see them all!
- **Rest: 3, 5, 7**—Select the number of lives you start with.
- **Key Option Type: A, B, C, D**—Pick one of the four controller configurations.
- **Sound Test: 00 through 19**—Pick a music track to listen to. Press A, B, X, or Y to hear the sound.
- **Sound Mode: STEREO OR MONAURAL**—The Super NES always uses stereo sound. If the TV you are using is monaural, the sound will come through on only one side when an AV cable is used. To remedy this situation, change the setting from **STEREO** to **MONAURAL**. Then both the left- and right-side music will come out of a single speaker.



## Those wonderful toys

**B**atman has a few special gadgets up his sleeve—and on his utility belt. In many of the stages you can select a gadget to aid **Batman** in his fight against crime.

The **Batarangs** are modern day versions of the old boomerangs. **Batman** will whip these at his opponents when you pick the **Batarang** as the **SELECTED ITEM**.

- Press the **SELECT** button to make the **Batarang** appear in the **SELECT ITEM** window.
- Press the **A** button to throw.

**NOTE:** In some stages the default attack method will be the **Batarang**. That means that you don't have to select the item and press the **A** button. Simply press the **Y** button as you normally would to attack.

The spear gun is used to raise **Batman's** chances in a fight to new heights—literally. **Batman** can fire the spear gun straight or at 45 degree and 90 degree angles (in certain areas).

- Make the spear gun the **SELECT ITEM**.
- Press the control pad in the direction you want to shoot the spear gun, then press the **A** button.
- The spear will stick into the wall or ceiling if possible. Press the **A** button again to retract the cable, thus pulling **Batman** along, or up.
- Press the control pad down to release the cable.
- In most areas the spear gun can be used to help **Batman** kick the enemies.



**Batman** carries a few vials of chemical explosives along in his utility belt. These vials will cause a huge flash and damage any enemy in the area. The number of vials **Batman** carries is shown in the upper left corner.

- Press the top right or left button and the X button at the same time to throw a vial.



## The stages

### Stage 1—Ambush in *Gotham Plaza*



### Stage 2—Battle in the Streets of *Gotham City*





### Stage 3—On the Prowl



### Stage 4—The Penguin's Trap



### Stage 5—To the *Batmobile*!



### Stage 6—Circus Train





## Stage 7—The Penguin's Lair



## Consumer Support

If you feel lost, or just need a boost, don't worry! There is help available. You can try our Game Hint and Tip Line.

### Konami Game Hint and Tip Line:

**1-900-896-HINT (4468)**

☎ 70¢ per minute charge

☎ Touch tone phone required

☎ Minors must have parental permission before calling

## Warranty Information

If you experience technical problems with your **Batman™ Returns** game pak, try our Warranty Services number:

(708) 215-5111



**Konami Game Hint and Tip Line:**

**1-900-896-HINT (4468)**

- ▣ 70¢ per minute charge
- ▣ Touch tone phone required
- ▣ Minors must have parental permission before calling

**KONAMI®**

Konami, Inc.  
900 Deerfield Parkway  
Buffalo Grove, IL 60089-4510

BATMAN and all related elements are the property of DC Comics Inc.  
TM & © 1992. ALL RIGHTS RESERVED. Konami® is a registered  
trademark of Konami Co., Ltd. ©1993 Konami. All rights reserved.

PRINTED IN JAPAN